



KEPA

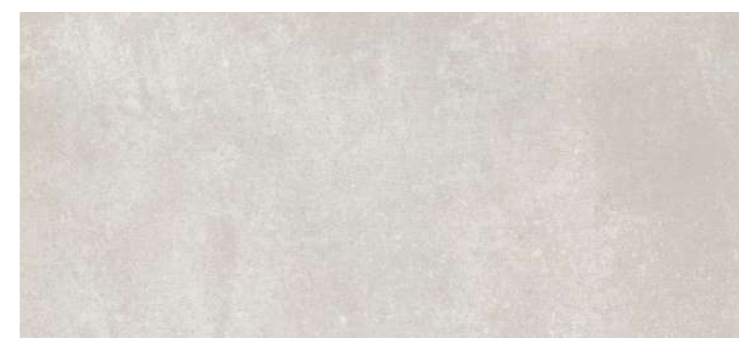
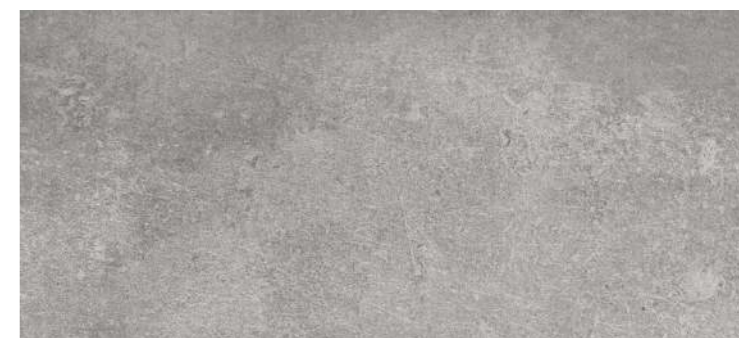
GRES FINE PORCELLANATO COLORATO IN MASSA
COLORBODY FINE PORCELAIN STONEWARE
GRÈS CÉRAME FIN COLORÉ DANS LA MASSE
DURCHGEFÄRBTES FEINSTEINZEUG

CARATTERISTICHE TECNICHE

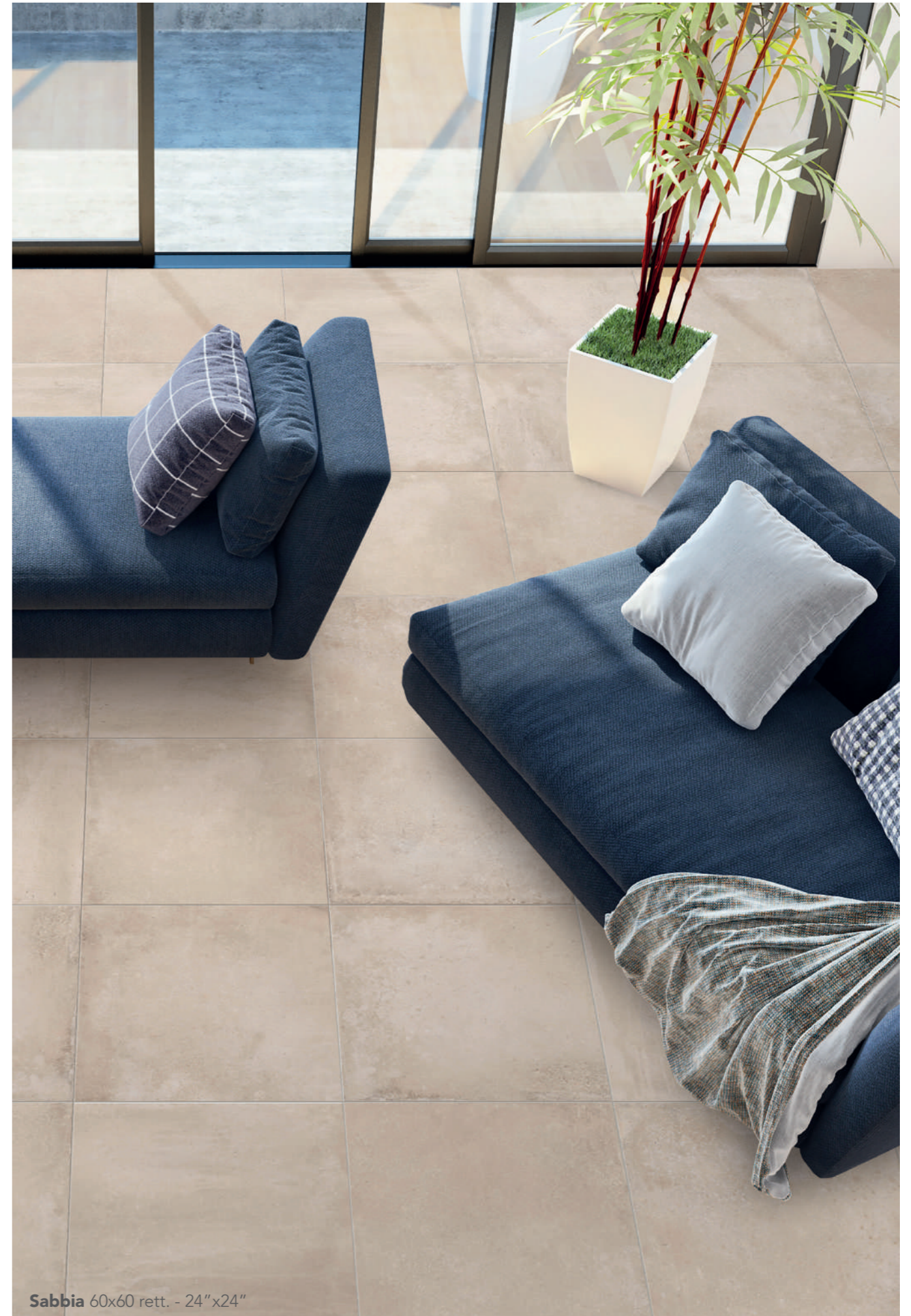
Technical Features - Caracteristiques Techniques - Technische Eigenschaften



60x60 rett. - 24"x24"
60x60 Grip Grigio e Sabbia - 24"x24"
30x60 rett. - 12"x24"



KEPA SABBIA



Sabbia 60x60 rett. - 24" x24"

KEPA GRIGIO

Grigio 60x60 rett. - 24"x24"



KEPA BIANCO



Bianco 60x60 rett. - 24"x24"



MADE IN ITALY

KEPA 

KEPA



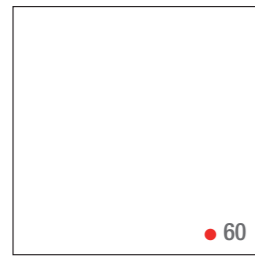
BIANCO

GRIGIO

SABBIA

FORMATI

SIZES / FORMATS / FORMATE



60x60 rett. - 24"x24"

2001724 KEPA Bianco rett.
2001722 KEPA Grigio rett.
2001723 KEPA Sabbia rett.

2001728 KEPA Grigio GRIP rett.
2001729 KEPA Sabbia GRIP rett.



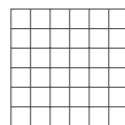
30x60 rett. - 12"x24"

2001734 KEPA Bianco rett.
2001732 KEPA Grigio rett.
2001733 KEPA Sabbia rett.

MOSAICO CON TOZZETTO 30X30 - 12"x12"
(PZXBOX 11)

▲ 26

2001749 30 X 30 MOSAICO KEPA 5 X 5 BIANCO
2001747 30 X 30 MOSAICO KEPA 5 X 5 GRIGIO
2001748 30 X 30 MOSAICO KEPA 5 X 5 SABBIA



BATTISCOPA 7,1x60 - 2.8"x24"
(PZXBOX 14)

▲ 14

2001746 7,1 X 60 KEPA BATTISCOPA BIANCO
2001744 7,1 X 60 KEPA BATTISCOPA GRIGIO
2001745 7,1 X 60 KEPA BATTISCOPA SABBIA



IMBALLI E PESI

PACKING AND WEIGHT - EMBALLAGES ET POIDS - VERPACKUNG UND GEWICHT

Articolo Item Reference Artikel	Formato Size Format Format	Pz.xScat. PiecesxBox Stk.xKrt. Pcs / Bte	Mq.xScat. SqmxBox M ² / Bte QmxKrt.	PesoxScat. WeightxBox Poids / Bte(kg) GewichtxKrt(kg)	Scat.xPal. BoxesxPal. Bte / Pal. Krt.xPal.	Mq.xPal. SqmxPal. M ² / Pal. QmxPal.	PesoxPal. WeightxPal. Poids / Pal.(kg) GewichtxPal.(kg)
KEPA	60x60 rett.	4	1,44	25,2	32	46,08	806
KEPA	30x60 rett.	7	1,26	22,05	40	50,4	882